

Fig. 192

Adjustable Pipe Saddle

**Size Range:** 2" through 12"  
**Material:** Carbon steel  
**Finish:** ☐ Plain or ☐ Zinc Plated (Hot-Dip Galvanized optional)  
**Service:** Stanchion type support for **stationary** pipe where vertical adjustment is required.  
**Approvals:** Complies with Federal Specification A-A-1192A (Type 38), ANSI/MSS SP-69 and MSS SP-58 (Type 38).  
**Ordering:** Specify pipe size to be supported, figure number, name and finish.

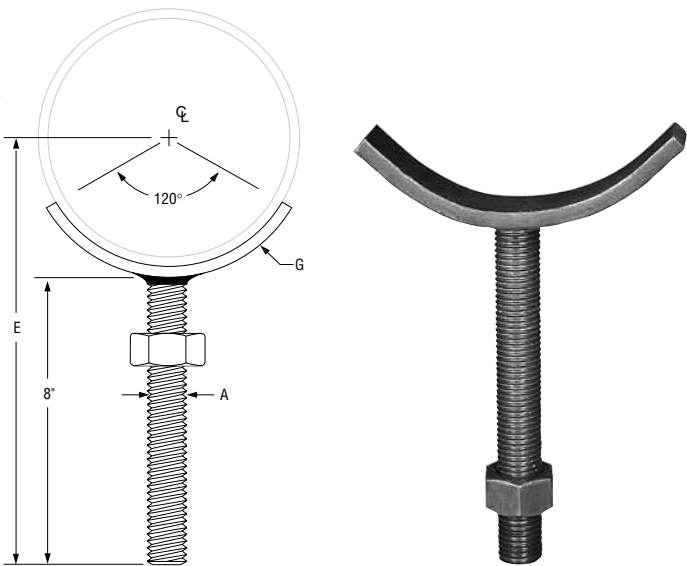


FIG. 192: DIMENSIONS (IN) • WEIGHTS (LBS)				
Pipe Size	Rod Size A	E	G	Weight
2	5/8	9 <sup>7</sup> / <sub>16</sub>	1/4 x 1	1.0
2½		9 <sup>11</sup> / <sub>16</sub>		1.4
3		10		1.6
3½		10¼		2.6
4	7/8	10½	1/4 x 1¼	3.0
5		11		3.2
6	1	11 <sup>11</sup> / <sub>16</sub>	3/8 x 1½	4.9
8		12 <sup>11</sup> / <sub>16</sub>		6.2
10	1¼	13 <sup>7</sup> / <sub>8</sub>	½ x 2	10.5
12		14 <sup>7</sup> / <sub>8</sub>		11.8

PROJECT INFORMATION		APPROVAL STAMP			
Project:		<input type="checkbox"/> Approved			
Address:		<input type="checkbox"/> Approved as noted			
Contractor:		<input type="checkbox"/> Not approved			
Engineer:		Remarks:			
Submittal Date:					
Notes 1:					
Notes 2:					